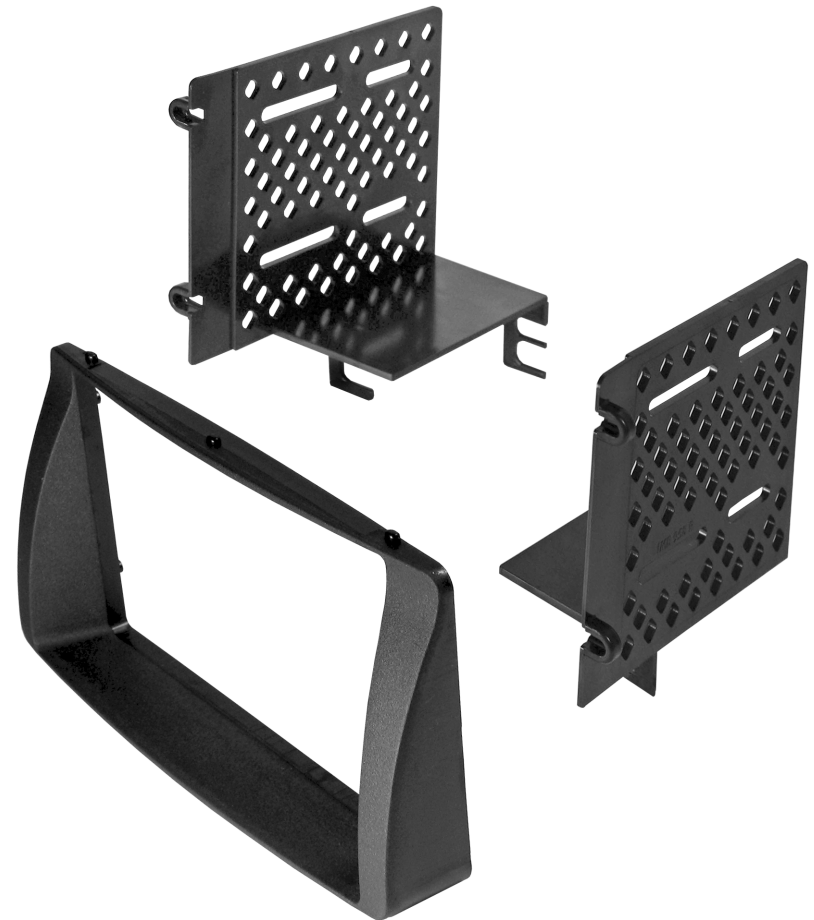


For information about other American International automotive accessories visit our website at:

<http://www.aius.net>



**American
International**
Car Stereo Installation Kits & Accessories



TOYK958 Mounting Kit



American International

WWW.AIUS.NET

2500 East Francis Street Ontario, CA 91761, U.S.A.

USA Sales (800) 336-6500

Canada Sales (888) 922-3006

CUSTOMER HELP LINE

8am-4:30 P.S.T. Monday-Friday Except Holidays

USA 800-323-4329 • Canada 800-245-8777

IT0YK958

VEHICLE APPLICATIONS

Toyota

2003-08 COROLLA

DASH DISASSEMBLY INSTRUCTIONS

1. Carefully remove the trim around the shift lever (unscrew shift knob for manual shift vehicles).
2. Carefully pull on the middle climate control knob and remove. Remove the (1) phillips screw from this location.
3. Carefully pry the climate controls and pocket assembly forward, disconnect all harnesses and remove assembly.
4. Remove the (4) 10mm bolts securing the factory radio to the sub-dash.
5. Carefully pry Radio/Vent assembly forward, disconnect all harnesses and antenna lead end remove assembly.
6. Carefully remove radio from Vent assembly.

DOUBLE DIN INSTALLATION INSTRUCTIONS

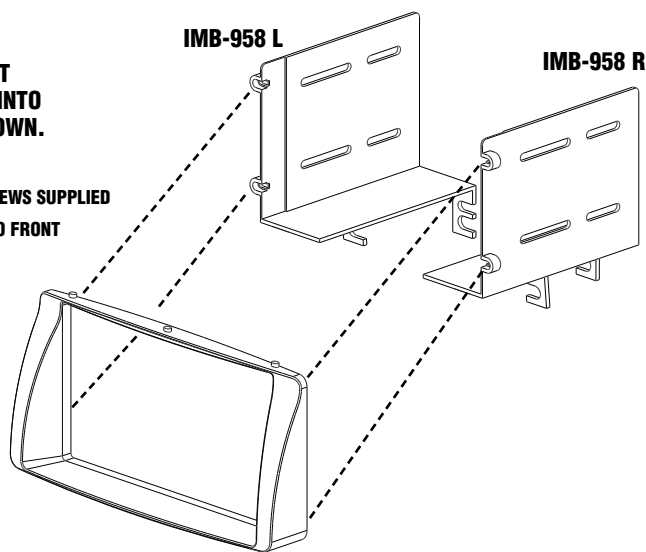
1. Attach the DITR-958 to the IMB-958L and IMB-958R mounting brackets. (Screws Supplied)
2. Insert ISO mountable radio between Left and Right brackets and attach radio to brackets using screws supplied with radio (when possible) or screws supplied with kit.
3. Mount radio and side brackets to factory radio bezel. Then place radio trim bezel back into position.
4. Attach a rear support bracket to the rear of the radio components and adjust as needed to allow rear support bracket to rest in the sub-dash (optional).
7. Mount radio with brackets to sub-dash.

FIGURE A

INSERT LEFT AND RIGHT MOUNTING BRACKETS INTO RADIO OPENING AS SHOWN.

*** MOUNT BRACKETS WITH SCREWS SUPPLIED**

*** INSERT RADIO FROM BACK TO FRONT FOR ALL INSTALLATIONS**



NOTES
