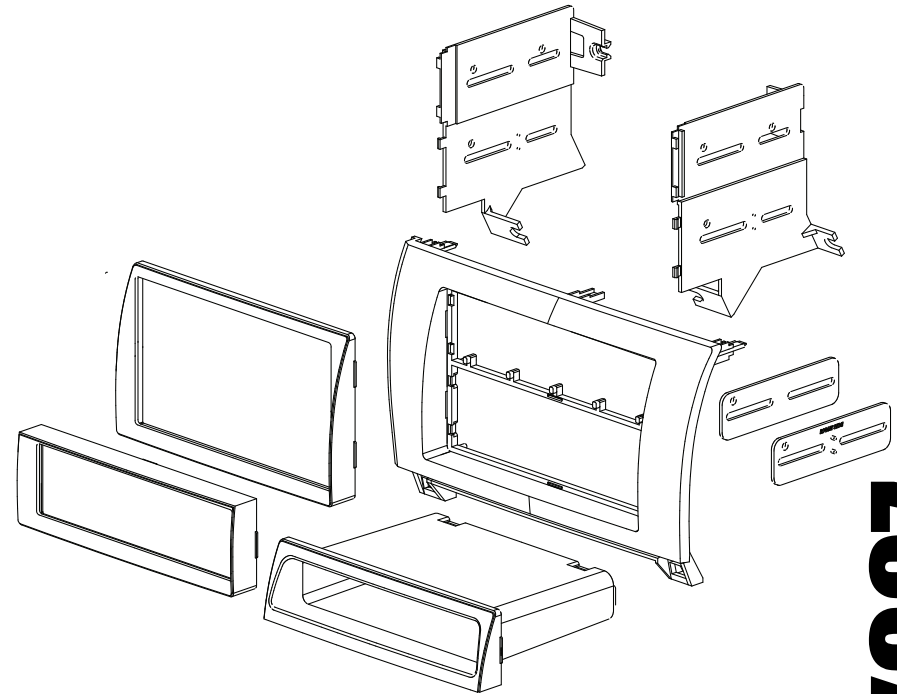


For information about other American International automotive accessories visit our website at:

<http://www.americaninternational.net>



**American
International**
Car Stereo Installation Kits & Accessories



TOYK967 Mounting Kit



American International

Automotive Products Division

1040 Avenida Acaso • Camarillo, CA 93012, U.S.A.

USA Sales (800) 336-6500 • Canada Sales (888) 922-3006 • USA Fax (805) 388-7950

For information about other accessories visit our website at:

<http://www.americaninternational.net>

CUSTOMER HELP LINE

USA 800-323-4329 • Canada 800-245-8777

iTOYK967

VEHICLE APPLICATIONS

Toyota

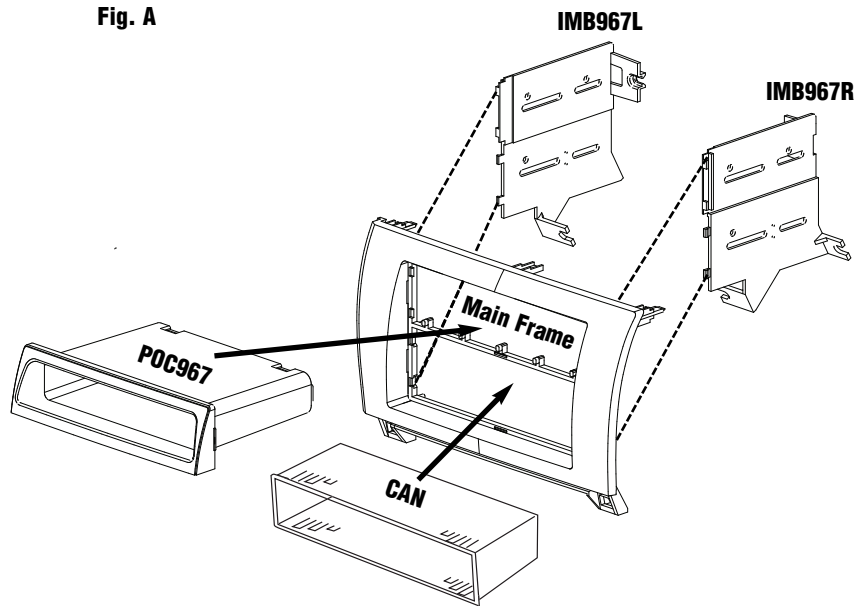
2007-13 TUNDRA

2008-14 SEQUOIA

DIN MOUNT INSTALLATION INSTRUCTIONS

1. Attach the left and right side brackets to the main bracket (See illustration below).
2. Attach left and right side brackets to the rear of the pocket using screws supplied w/kit.
3. Insert DIN sleeve from your new radio into the lower section of the installation kit. (This DIN sleeve comes with all new radios and slides off the back of the radio)
4. Depress the tabs from inside the sleeves opening upward, outward, and downward to secure sleeve to the installation kit.
5. Install radio into sleeve and lock into place.
6. Support rear of radio with back strap (Optional).

NOTE: Optional Trim Ring (ITR967) may be used on some radios if desired.

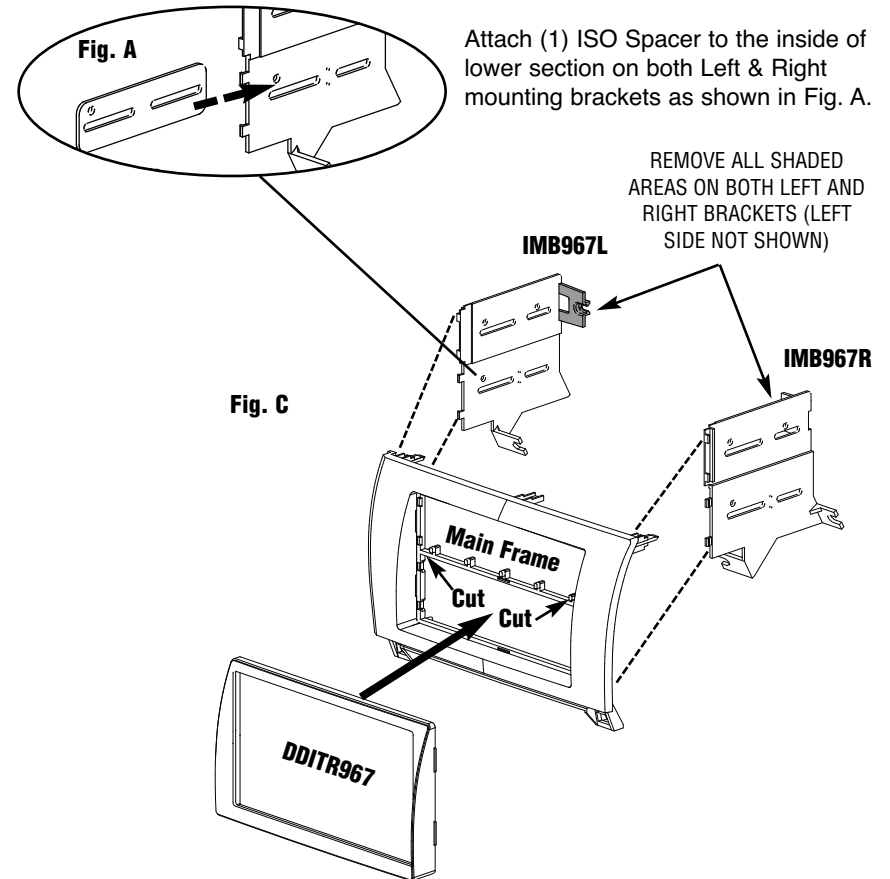


DOUBLE DIN MOUNT INSTALLATION INSTRUCTIONS

NOTE: REMOVE POCKET SUPPORT TABS (Both L&R mounting brackets).

1. Attach the left and right side brackets to the main bracket. See illustration below.
2. Attach ISO Mount Spacers to the inside of lower section on both Left & Right mounting brackets as shown in Fig. B.
3. Slide radio into kit from rear & attach to ISO mounting brackets using screws supplied with radio when possible, or use screws supplied with kit. (DO NOT tighten screws at this time) (Be sure the length of the screws DO NOT touch any electrical parts inside radio, some screws may need to be shortened.)
4. Slide radio forward or backward for your desired look and then tighten the mounting screws. Use ISO trim ring when possible.

NOTE: Optional ISO trim ring (DDITR967 included) may be used in place of after-market radio's trim ring. For ISO mount applications, mount after-market radio to side brackets using hardware included.





13. using your hand carefully pull the entire cup-holder cavity out.



14. using your hand carefully unclip the left side of the climate controls from the radio and sub-dash.



15. using your hand carefully unclip the right side of the climate controls from the radio and sub-dash and remove.



16. using a 10mm socket, remove the 2 10mm bolts holding the right side of the radio to the sub dash.



17. using a 10mm socket, remove the 2 10mm bolts holding the left side of the radio to the sub dash.



18. Carefully pull radio towards you and unclip from sub-dash.

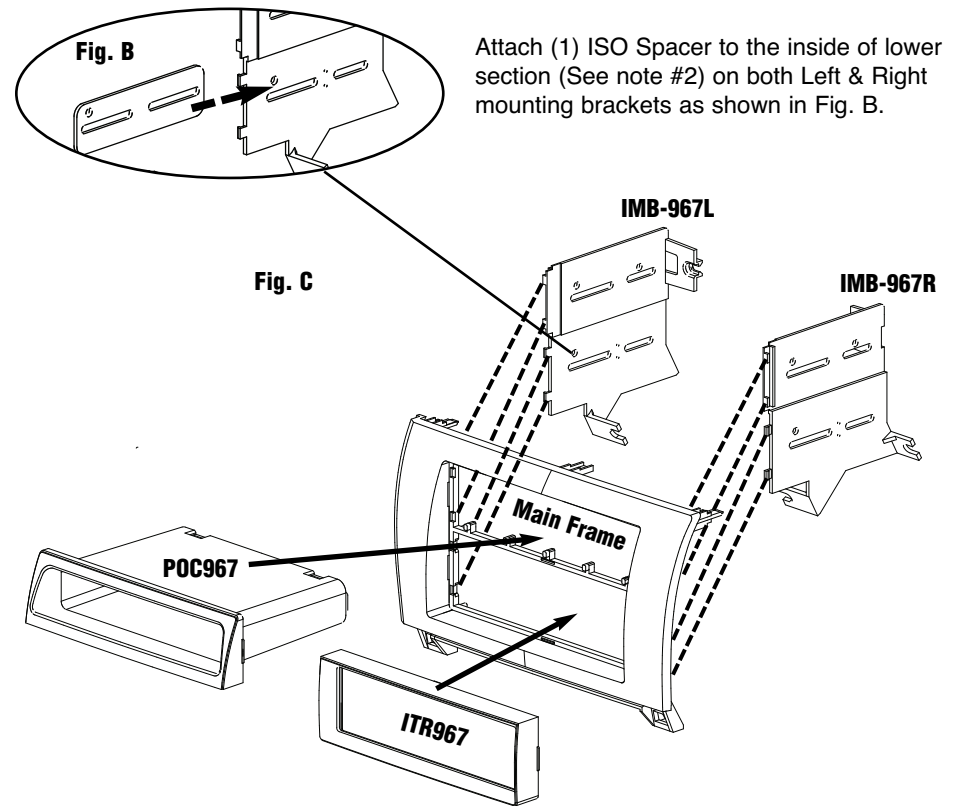


19. Pull radio completely out from the radio cavity and disconnect all harnesses.

ISO MOUNT INSTALLATION INSTRUCTIONS

1. Attach the left and right side brackets to the main bracket. See illustration below.
2. Attach left and right side brackets to the rear of the pocket using screws supplied w/kit.
3. Attach ISO Mount Spacers to the inside of lower section on both Left & Right mounting brackets as shown in Fig. B.
4. Slide radio into kit from rear & attach to ISO mounting brackets using screws supplied with radio when possible, or use screws supplied with kit. (DO NOT tighten screws at this time) (Be sure the length of the screws DO NOT touch any electrical parts inside radio, some screws may need to be shortened.)
5. Slide radio forward or backward for your desired look and then tighten the mounting screws. Use ISO trim ring when possible.

NOTE: Optional ISO trim ring (ITR967 included) may be used in place of after-market radio's trim ring. For ISO mount applications, mount after-market radio to side brackets using hardware included.



DASH DISASSEMBLY



1. Using your hand, carefully pull the left side of the instrument cluster towards you.



2. Using your hand, carefully pull the right side of the instrument cluster towards you.



3. Using your hand pull from the center of the instrument cluster towards you.



4. Using your hand, carefully pull the right side lower part of the instrument cluster towards you.



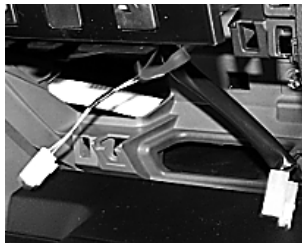
5. Disconnect harnesses and remove instrument cluster. Unclip sleeve from steering column.



6. using your hand carefully pull and remove the bezel underneath the climate controls.



7. using your hand carefully pull the left side of the climate controls.



8. using your hand carefully pull and remove the climate controls.



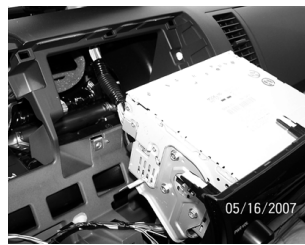
9. using a 10mm socket, remove the 2 10mm bolts holding the right side of the radio to the sub dash.



10. using a 10mm socket, remove the 2 10mm bolts holding the left side of the radio to the sub dash.



11. Carefully pull radio towards you and unclip from sub-dash.



12. Pull radio completely out from the radio cavity and disconnect all harnesses.

DASH DISASSEMBLY



1. Lower column shifter all the way down and tilt the steering wheel all the way down.



2. Using your hand, carefully pull the left side of the instrument cluster towards you.



3. Using your hand, carefully pull the right side of the instrument cluster towards you.



4. Using your hand pull from the center of the instrument cluster towards you.



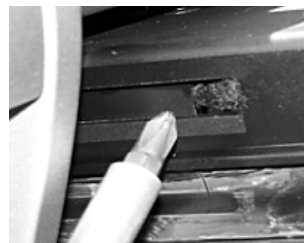
5. Using your hand, carefully pull the right side lower part of the instrument cluster towards you.



6. Disconnect harnesses and remove instrument cluster. Unclip sleeve from steering column.



7. Open and slide out cup-holder.



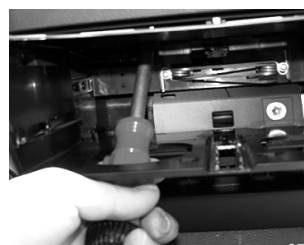
8. Using a screw driver, push inward on the stoppers located on the left and right side of the cup holder.



9. After stoppers have past the cup holder assembly, the cupholder is ready to slide out.



10. Slide the entire cup holder / tray completely out.



11. Remove 2 fillips head screws located inside the cup holder cavity.



12. Remove 2 fillips head screws located underneath the cup holder cavity.